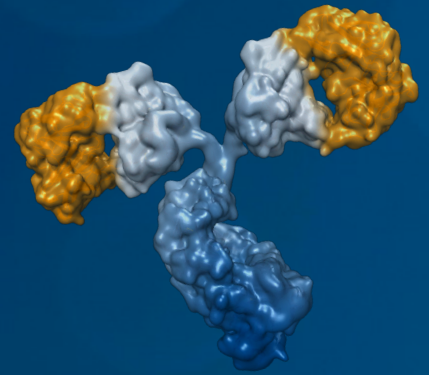
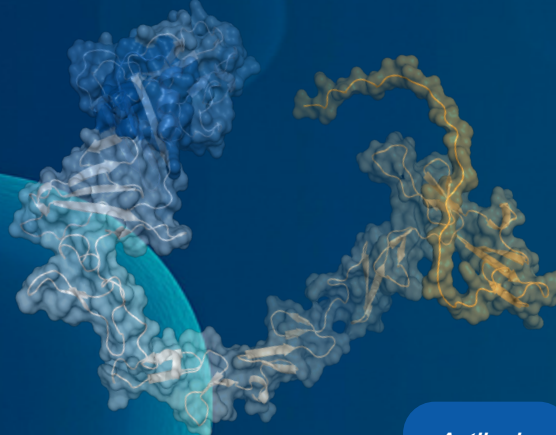
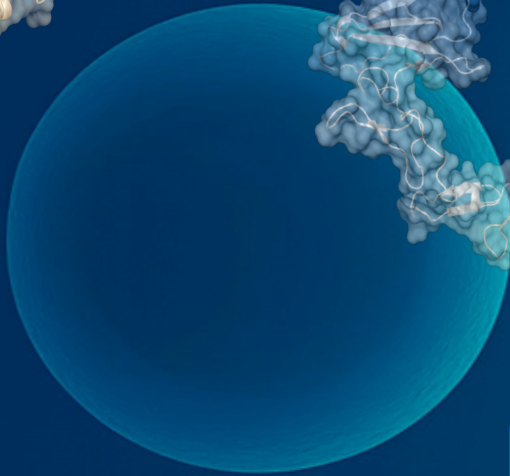
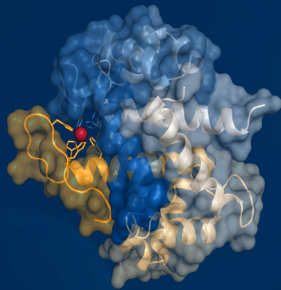




INVIVO

BioTech Services GmbH  
a BRUKER company



*mAb*  
Production in  
2-100 L

*ISO 9001*  
&  
*ISO 13485*

*Antibody*  
Development  
from B-Cells

*CHO & HEK*  
Production in  
Bioreactors

*Protein*  
Production in  
*E. coli*

*High-precision*  
Analytical  
Capabilities

*T-Cell*  
Profiling with  
Beacon

*Immunoassay*  
Development &  
Production

*In Vivo*  
Catalogue  
Products

## Service Portfolio

### AREAS OF ACTIVITY:

- Contract Development and Manufacturing
- Antibody Development: Innovative Beacon® technology for superior antibody discovery; state-of-the-art hybridoma workflows
- Direct measurement of antibody function at the single-cell level in real time
- Bioproduction in Bioreactors 2-100 L
- Cell line development for pre-clinical and research use
- InVivo products (Antibodies and Controls)
- Comprehensive Analytics
- Development and Production of Immunoassays

Since 1998, InVivo BioTech has grown from a classical CMO into a next-generation innovation partner for advanced biologics.

**Our roots in Hybridoma, CHO, HEK, and *E. coli* production have evolved into a strong focus on superior antibody discovery, powered by Beacon® single-cell technology and real-time functional antibody measurement at the single-cell level.**

We extend this discovery excellence with innovative T-cell functional analytics, offering deep understanding of immune activation and the potential of next-generation therapies.

With a fully equipped analytics laboratory and GLP- and IVD-compliant kit and assay manufacturing, we provide end-to-end solutions from concept to clinic. Contact us to accelerate diagnostic programs and future therapy development across infectious diseases, autoimmune and thyroid disorders, cancer, and neurodegenerative conditions (AD/PD) and more.

## ANTIBODY DEVELOPMENT FROM B-CELLS

We generate highly specific antibodies using modern Beacon® single cell technology and classic hybridoma platforms. The InVivo workflow has higher hit rates for rare, high affinity clones and shortens the overall antibody development timeline. We have extensive antibody development experience in rabbit and mouse systems.

Unlike hybridoma methods, Beacon® allows direct, real time measurement of antibody function for each individual cell. This substantially boosts discovery success, yielding a noticeably higher number of rare, high affinity clones and a greater total pool of promising candidates.



## CHO & HEK PRODUCTION IN BIOREACTORS AND HYBRIDOMA PRODUCTION IN 2-100 L

Our scalable bioreactor systems enable flexible production for research and preclinical applications.

InVivo is your partner for custom monoclonal antibody production from hybridoma cell lines. Proprietary serum-free media and optimized processes like high cell density fermentation guarantee a production at highest cost-effectiveness.

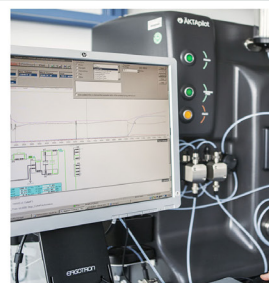
If you start an antibody development project with us, you benefit from a fully integrated, end to end workflow. After identifying top candidates on the Beacon® platform, we perform rapid, high accuracy antibody sequencing to capture complete variable region information. The selected sequences move directly into small scale test expression, enabling fast assessment of productivity, functionality, and developability before advancing to larger scale production.

Once the best candidates are confirmed, we seamlessly transition into CHO and HEK scale-up, leveraging our 2–100 L bioreactor systems. Our facilities allow the production of up to 1 kg monoclonal antibodies from hybridoma for use in research, human in-vitro diagnostic, preclinical development, veterinary diagnostics, food and drinking water safety.

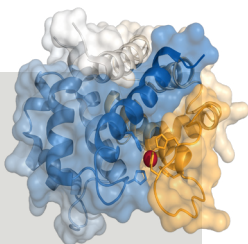
## RECOMBINANT PROTEIN PRODUCTION IN *E. COLI* AND MAMMALIAN SYSTEMS

For projects requiring speed and high productivity, we offer robust *E. coli* expression processes. Our expertise covers soluble expression, refolding strategies, and advanced purity optimization. We offer cultivation in 1 L up to 50 L. Our *E. coli* expression system for production of recombinant proteins offers several advantages: A shorter timeline for the entire process from cloning to protein recovery, inexpensive production processes, high protein yields and high flexibility in scale. Smaller peptides and proteins without posttranslational modifications, like antigens, bacterial proteins, hormones, pro-hormones, tumor markers or cytokines, are readily expressed in bacterial cells.

InVivo's optimized system for large-scale transient gene expression, facilitates the fast production of mammalian-derived recombinant proteins. Combining our optimized host cell line HEK-INV with harmonized processes and consumables, we increase production rates up to 80-fold compared to commercially available systems. This makes InVest the perfect solution for medium-scale production of recombinant antibodies, antigens, and other complex proteins.



# Your high-quality contract manufacturer and B2B/ CDMO service laboratory in Germany



## HIGH-PRECISION ANALYTICAL CAPABILITIES

With ELISA, SPR affinity measurements and mass spectrometry we provide a complete characterization package. With high-resolution mass spectrometry, we achieve tighter batch-to-batch control and highly accurate analysis of glycosylation patterns, ensuring consistent product quality.

We offer direct measurement of antibody function at the single-cell level, delivering functional insights that traditional endpoint assays cannot capture.

By combining kinetic analysis with true cellular context, Bruker technology provides an exceptionally precise picture of antibody binding and downstream signal activation.

## T-CELL PROFILING

T-cells are central to modern immunotherapy, and understanding their behavior at high resolution is essential for developing effective treatments. At InVivo BioTech, we provide a next-generation analytical platform that reveals how T-cells activate, signal, and interact with their targets — far beyond what classical endpoint assays can deliver.

The InVivo platform enables single-cell functional analysis of T-cells, allowing you to directly observe:

Activation markers (e.g., CD69, CD25), cytokine secretion at the single-cell level or cytotoxic responses against target cells.

## IMMUNOASSAY DEVELOPMENT & PRODUCTION

We design and optimize high-performance immunoassays tailored to your analytical needs. Our workflows combine sensitive detection technologies with robust validation strategies to ensure accuracy, reproducibility, and regulatory-ready data. With extensive experience in IVD, FDA-aligned, and RUO kit development, we ensure robust assay performance, regulatory-ready validation, and reliable long-term reproducibility.

## IN VIVO CATALOG PRODUCTS

Our catalogue offers a curated selection of high-quality immune-relevant proteins and antibodies for preclinical studies. Each product is manufactured under stringent quality standards to ensure consistency, stability, and biological activity. Would you like more information about our catalogue products such as PD-1, HLA, mStab, or Tau? Which of these targets aligns best with your current research needs? With ready-to-use materials, you can streamline your workflows and focus on generating meaningful insights.



IVS CS-0189 Rev. 01

**InVivo BioTech Services GmbH**

Neuendorfstraße 24a - 24c  
16761 Hennigsdorf  
Germany

Phone +49 (0) 3302 866 93-21/-22  
Fax +49 (0) 3302 866 93-62

[info.invivo@bruker.com](mailto:info.invivo@bruker.com)

**For detailed product  
information please see**  
[www.invivo.de](http://www.invivo.de)

